
User Manual

For

Result Processing Module

Version 1.0

Bundelkhand University, Jhansi

Submitted By :

The logo for updesco, featuring the word 'updesco' in a stylized font. The 'u' and 'p' are blue, 'd' is red, 'e' is blue, 's' is red, and 'c' and 'o' are blue.

Designed & Developed By:

The logo for omni-NET TECHNOLOGIES (P) LIMITED. It features the text 'omni-NET' in a stylized font, with 'omni' in red and 'NET' in blue. Below this, 'TECHNOLOGIES (P) LIMITED' is written in a smaller font, and 'ISO 9001:2008 Certified' is written at the bottom.

Table of Contents

1. Login Page	3
2. User Management	3
3. Rule Master.....	4
4. Rules Course Map.....	4
5. Marks Uploading	5
6. Rule Details.....	5
7. Marks Filling.....	6
8. Marks From Web	6
9. Marks Updating	7
10. Result Processing	7
11. Result Updation	8
12. Result Declaration and Print Report	8
13. Report Export.....	9
14. Marks Status Report.....	9
15. Marksheet and Degree Printing	10
16. Miscellaneous Count Report.....	10

1. Login Page

- Follow instruction as mentioned in the image :

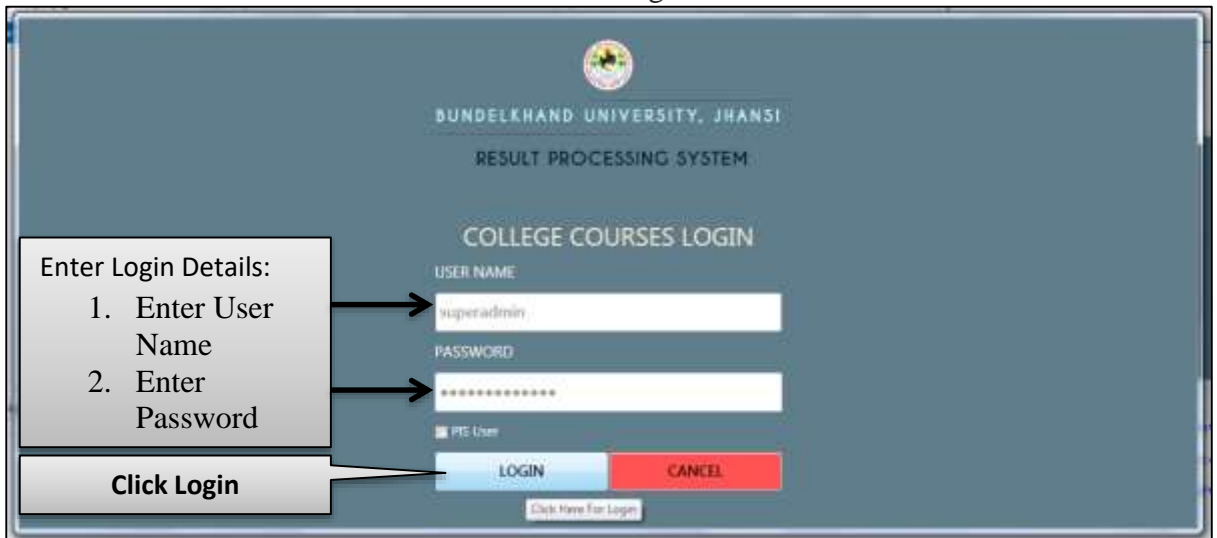


Image: Login Page

2. User Management

- Follow instruction as mentioned in the image :

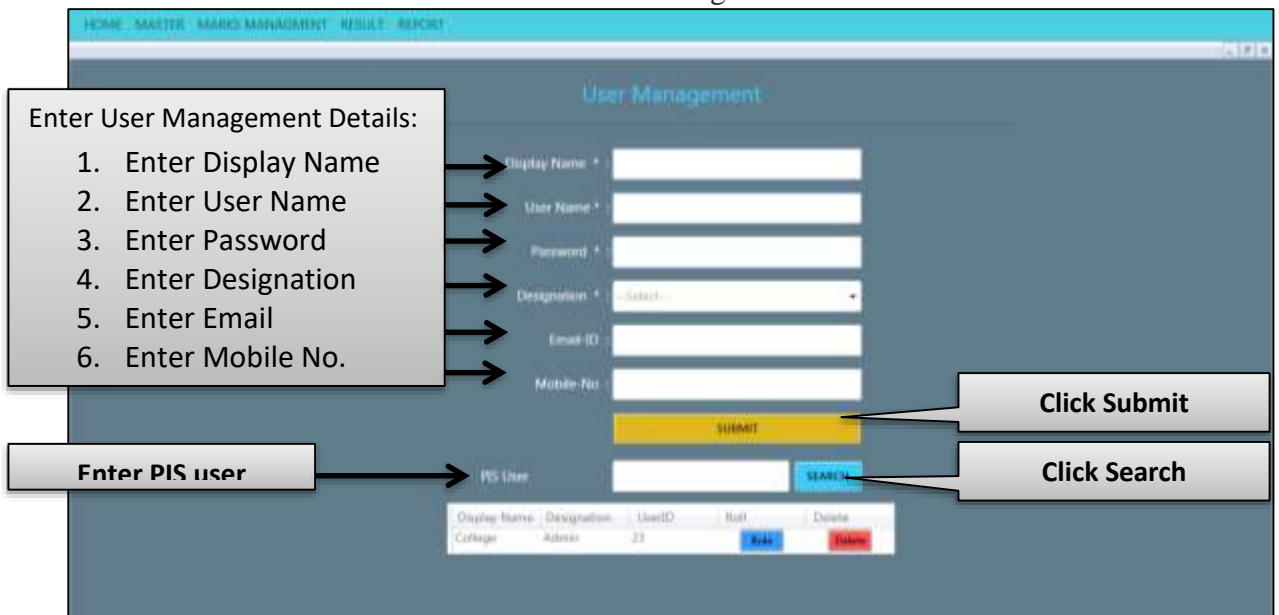


Image: User Management

3. Rule Master

- Follow instruction as mentioned in the image :

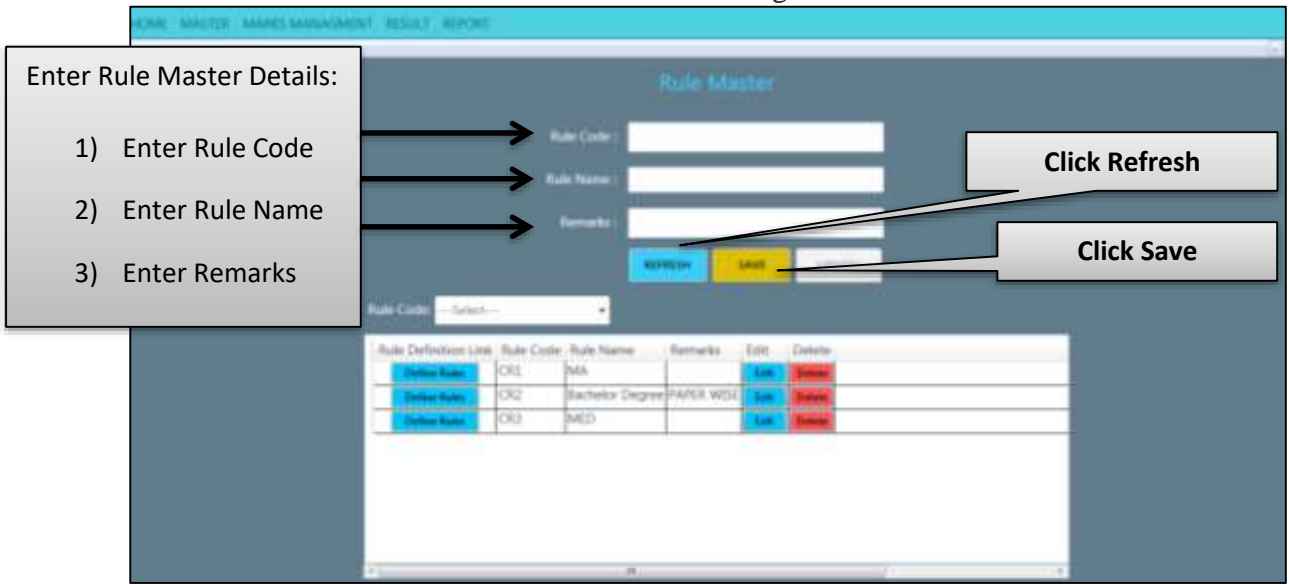


Image: Rule Master

4. Rules Course Map

- Follow instruction as mentioned in the image.

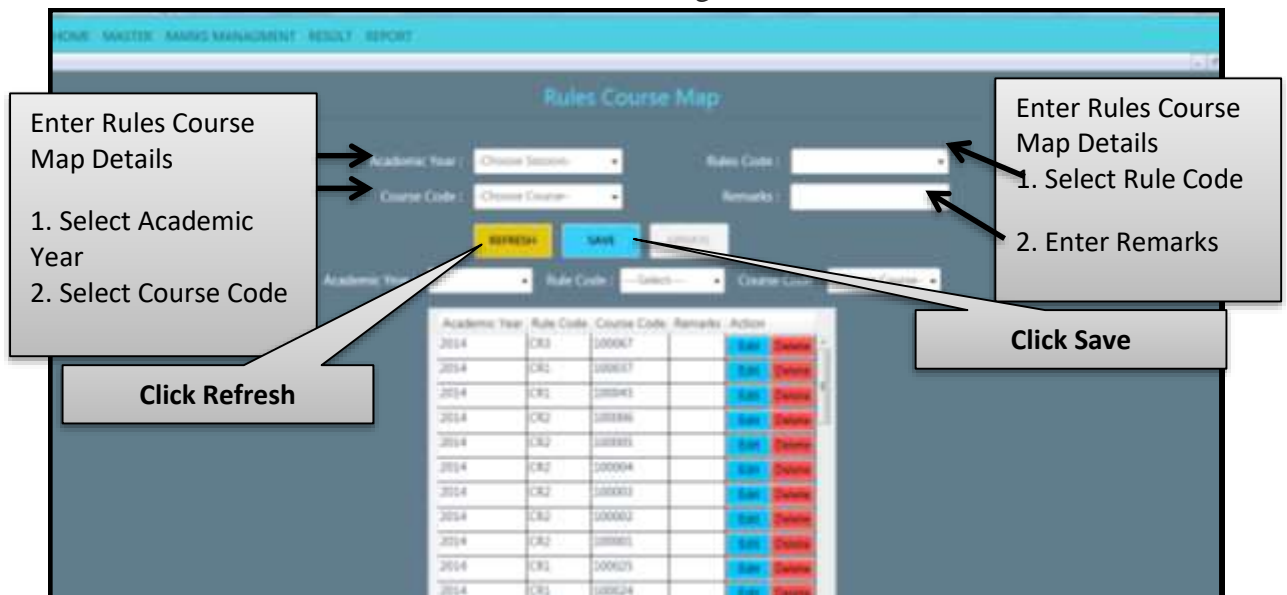


Image: Rule Course Map

5. Marks Uploading

- Follow instruction as mentioned in the image:

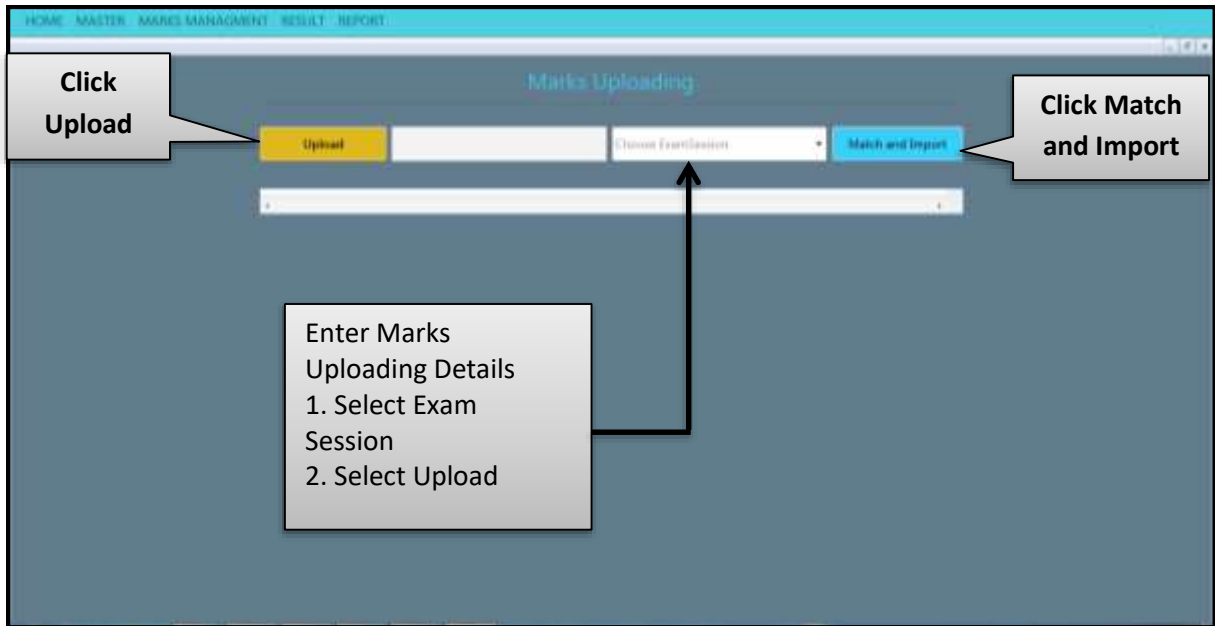


Image: Marks Uploading

6. Rule Details

- Follow instruction as mentioned in the image:

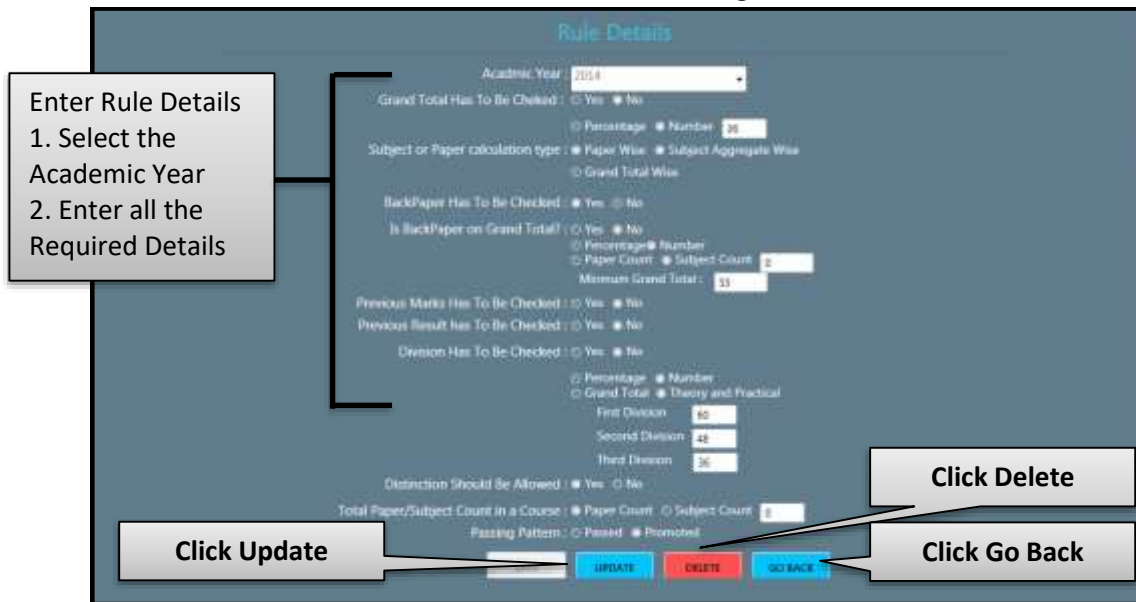


Image: Rule Details

7. Marks Filling

- Follow instruction as mentioned in the image:



Image: Marks Filling

8. Marks From Web

- Follow instruction as mentioned in the image:

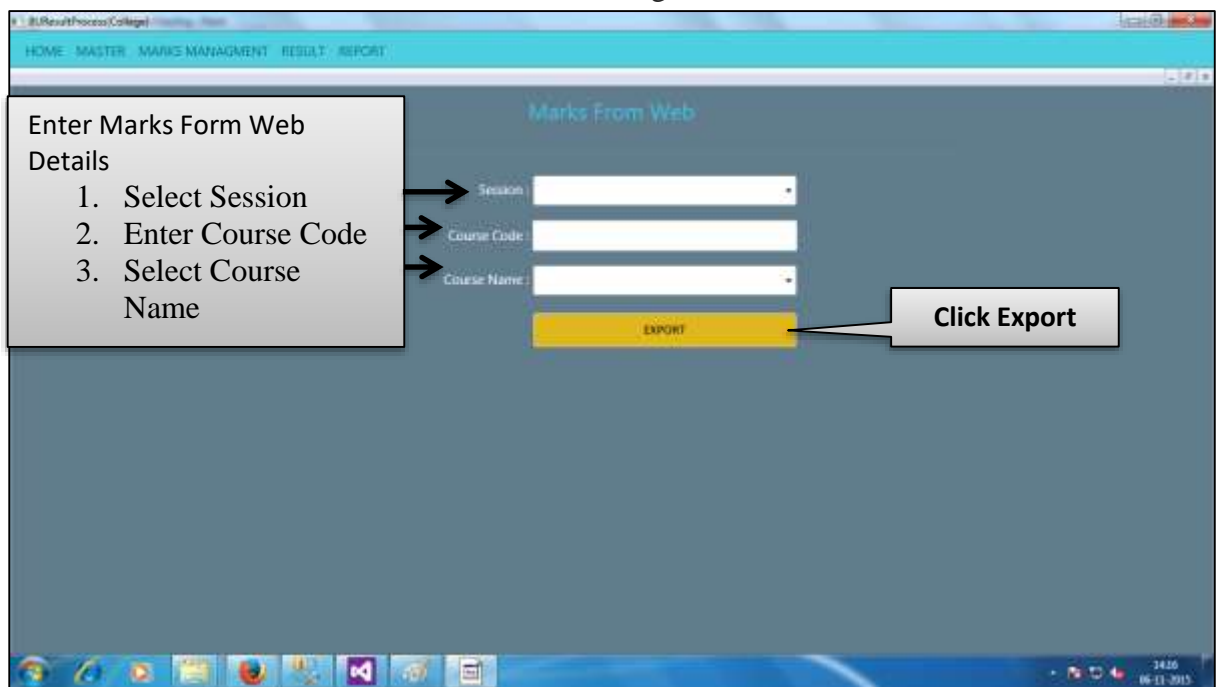


Image: Marks From Web

9. Marks Updating

- Follow instruction as mentioned in the image:

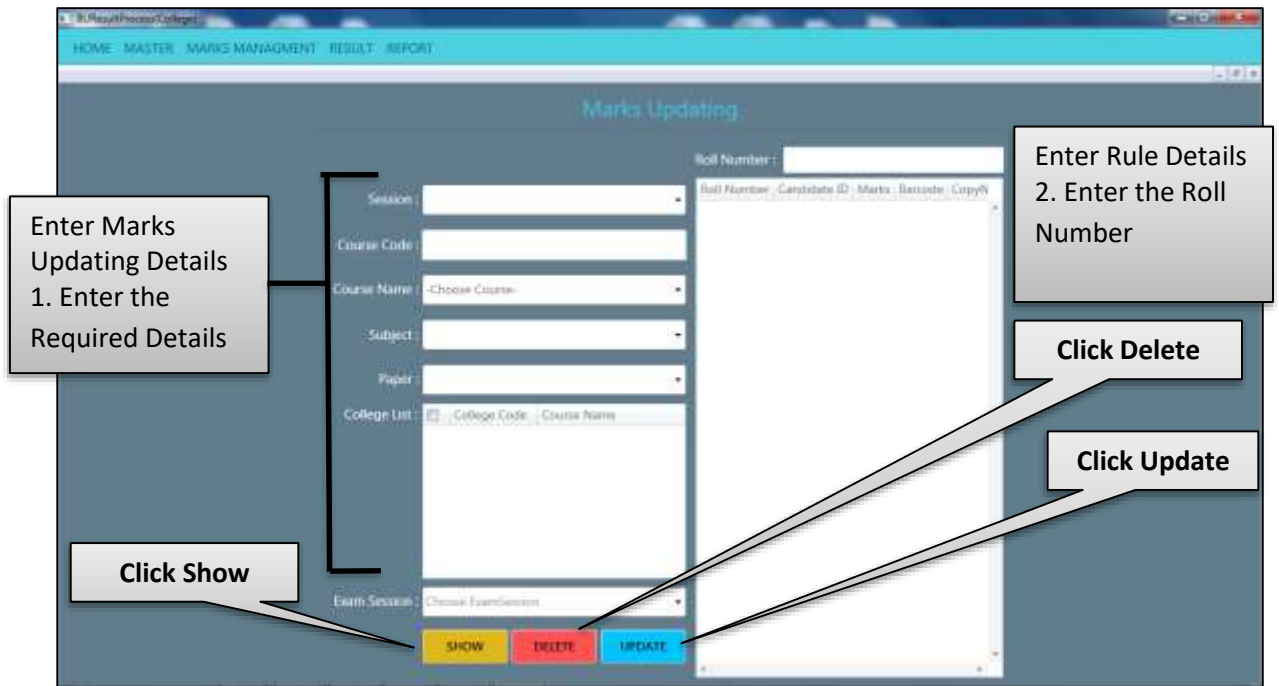


Image: Marks updating

10. Result Processing

- Follow instruction as mentioned in the image:

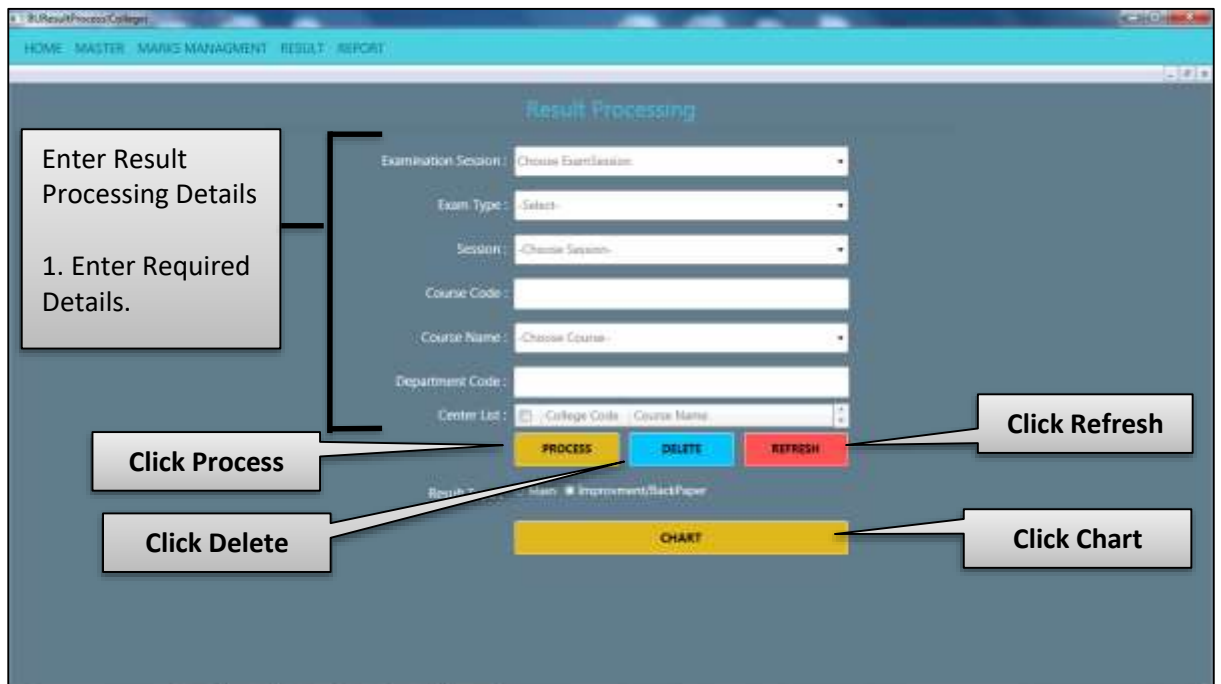


Image: Result Processing

11. Result Updation

- Follow instruction as mentioned in the image:

The screenshot shows the 'Result Updation' page with the following sections and callouts:

- Search:** A yellow 'SEARCH' button at the top right with a callout 'Click Search'.
- Form Fields:** Includes 'Choose Session', 'Choose Course', and 'Choose ExamSession' dropdowns.
- BASIC INFORMATION:** Fields for Name, Father's Name, Mother's Name, Exam Type, College, College Code, Previous Max, Previous Marks, Date of Birth, and Enrollment. A callout 'Enter Result Updation Details' points to these fields, with a sub-callout '1. Enter Required Details.'.
- EDIT PERSONAL INFO:** A yellow button with a callout 'Click Edit Personal Info'.
- MARKS INFORMATION:** Includes 'UPDATE MARKS' (red button), 'SUBJECT NAME | PAPER CODE | PAPER NAME | PAPER TYPE | Marks | Barcode | Copy No.', and 'Include/Exclude Environment study' checkbox. A callout 'Click Update Marks' points to the 'UPDATE MARKS' button.
- ADD:** A blue 'ADD' button with a callout 'Click Add'.
- RESULT INFORMATION:** Fields for Result, Grand Total, Total Max, Total Min, Total, Previous Marks, Pre. Max. Marks, Pre. Min. Marks, Previous Year, Theory Total, Result Date, Theory Marks, Practical Total, Practical Marks, scrutiny Status, and Correction Date. A callout 'Click Result Process' points to the yellow 'Result Process' button.

Image: Result Updation

12. Result Declaration and Print Report

- Follow instruction as mentioned in the image:

The screenshot shows the 'Result Declaration and Print Report' page with the following sections and callouts:

- Form Fields:** Includes 'Exam Session' dropdown, 'Session' dropdown, 'Course Code', 'Course Name' dropdown, 'College' dropdown (with sub-fields for College Code and Course Name), 'Type' radio buttons (Main, Improvement, Back Paper), and 'Declared Date' text input.
- DECLARE:** A yellow button with a callout 'Click Declare'.
- Callout:** A box on the left with the text 'Enter Result Declaration and Print Report Details' and '1. Enter the Required Details.' pointing to the form fields.

Image: Result Declaration and Print Report

13. Report Export

- Follow instruction as mentioned in the image:

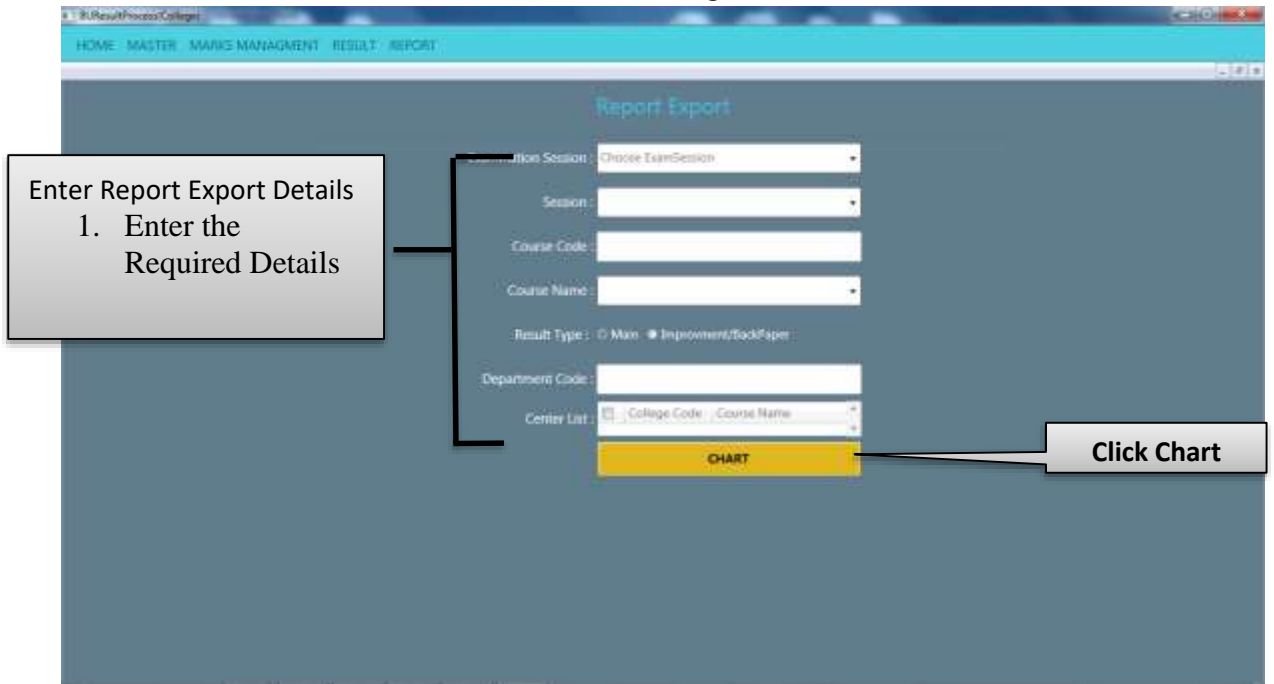


Image: Report Export

14. Marks Status Report

- Follow instruction as mentioned in the image

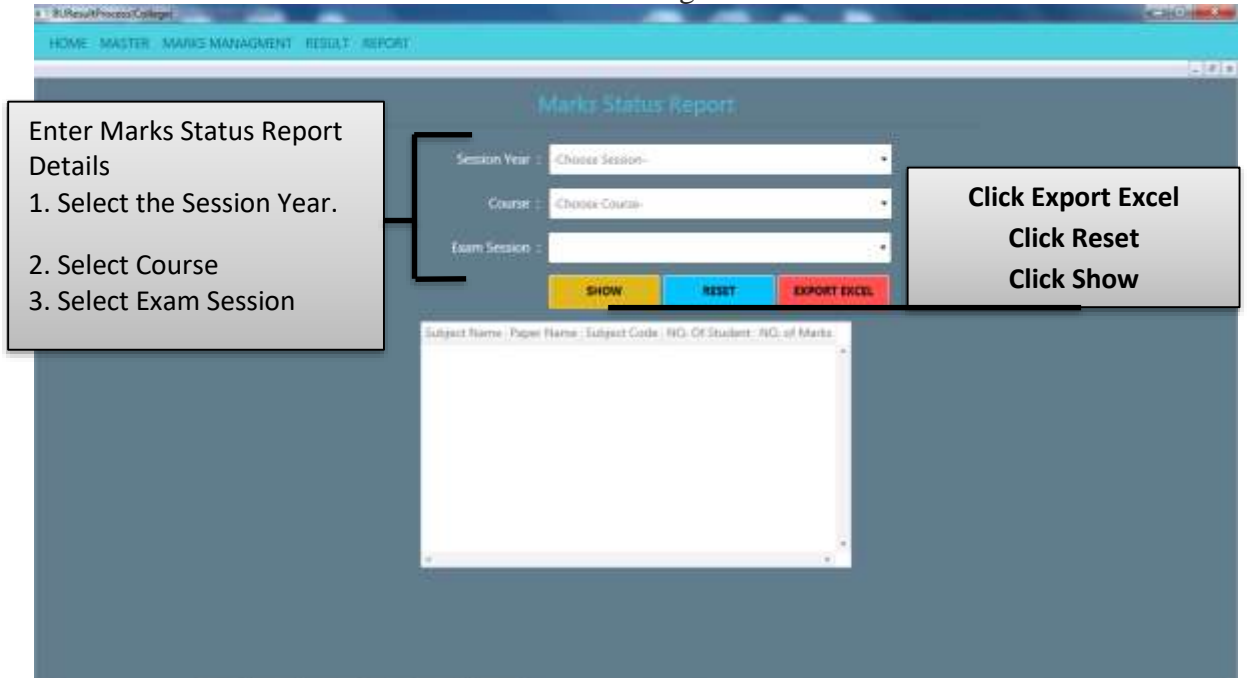


Image: Marks Status Report

15. Marksheet and Degree Printing

- Follow instruction as mentioned in the image :

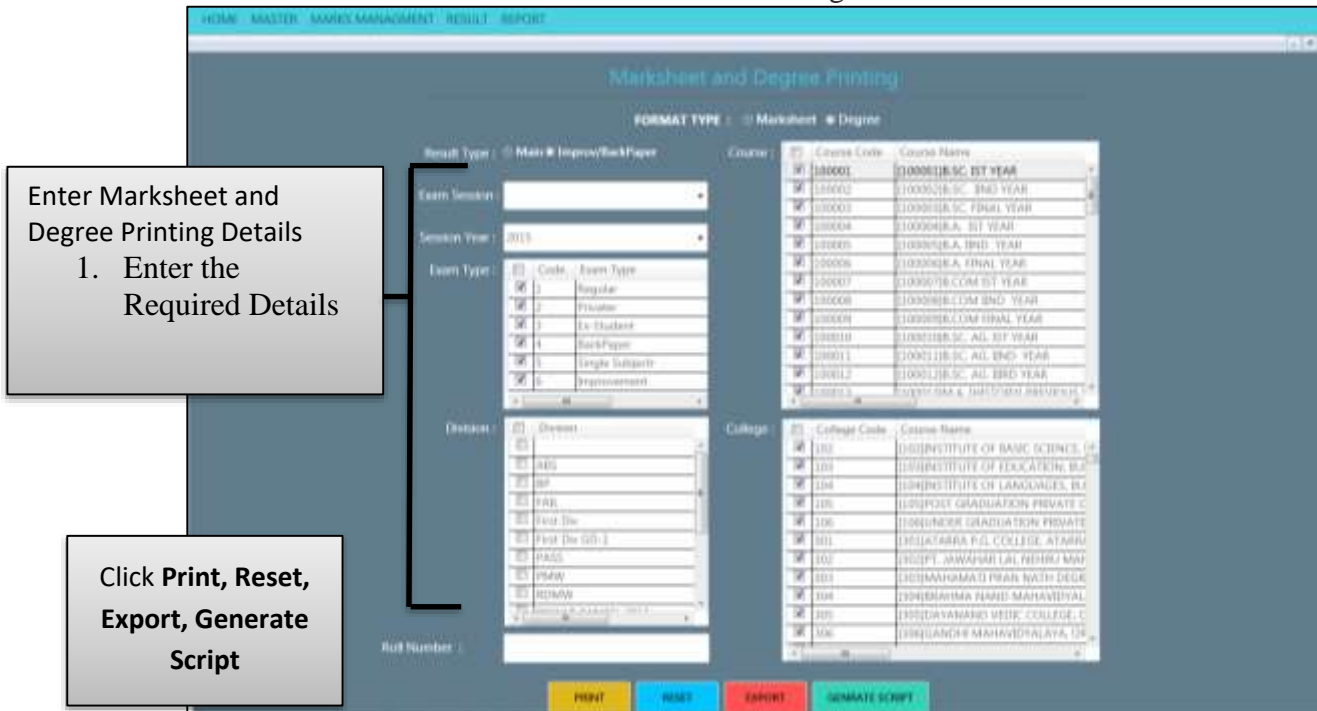


Image: Marksheet and Degree Printing

16. Miscellaneous Count Report

- Follow instruction as mentioned in the image :

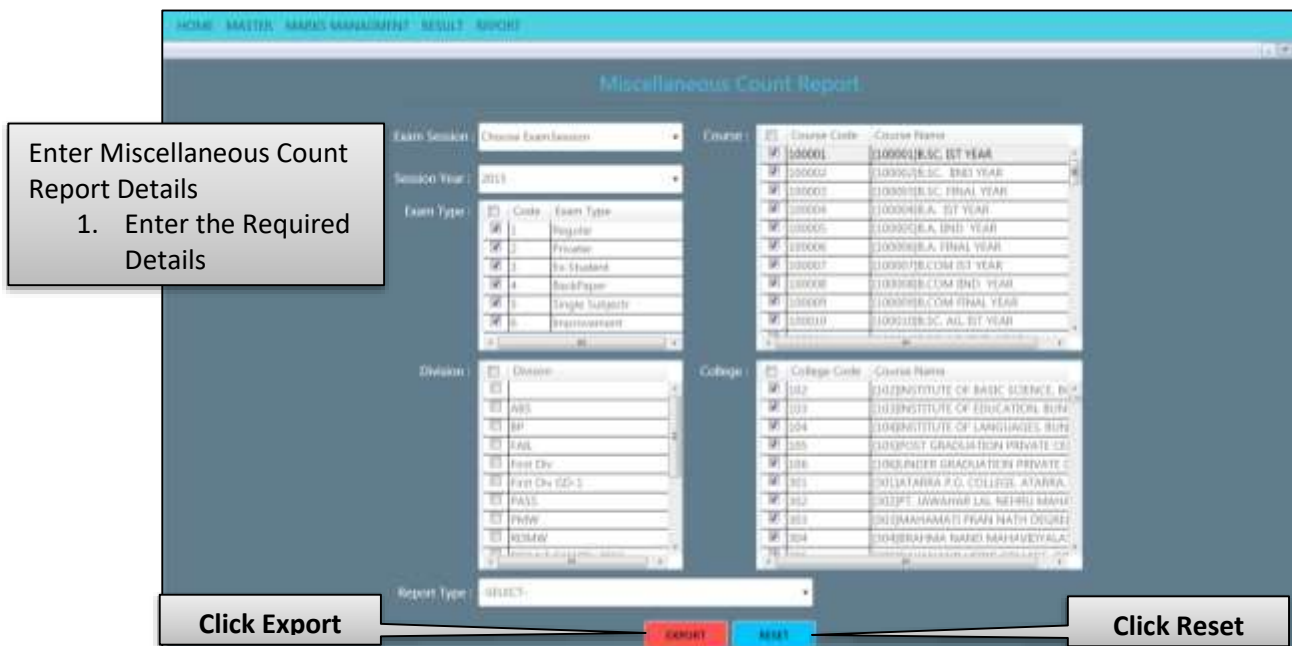


Image: Miscellaneous Count Report